

# ZTF Zirnhelt Timber Frames

*Sustainable by Design*

## *Lac La Hache Home*

### *At a Glance:*

<i>Main (24 x 36)</i>	<i>864 sq ft</i>
<i>Loft</i>	<i>321 sq ft</i>
<i>Basement</i>	<i>864 sq ft</i>
<i>Bedrooms</i>	<i>3</i>
<i>Bathrooms</i>	<i>3</i>
<i>Total living space</i>	<i>2,049 sq ft</i>



*This home designed by: Zirnhelt Timber Frames*



Call or email us to start your sustainable building project. Visit our site, meet our crew and tour a Zirnhelt Timber Frame home.

**We look forward to working with you!**

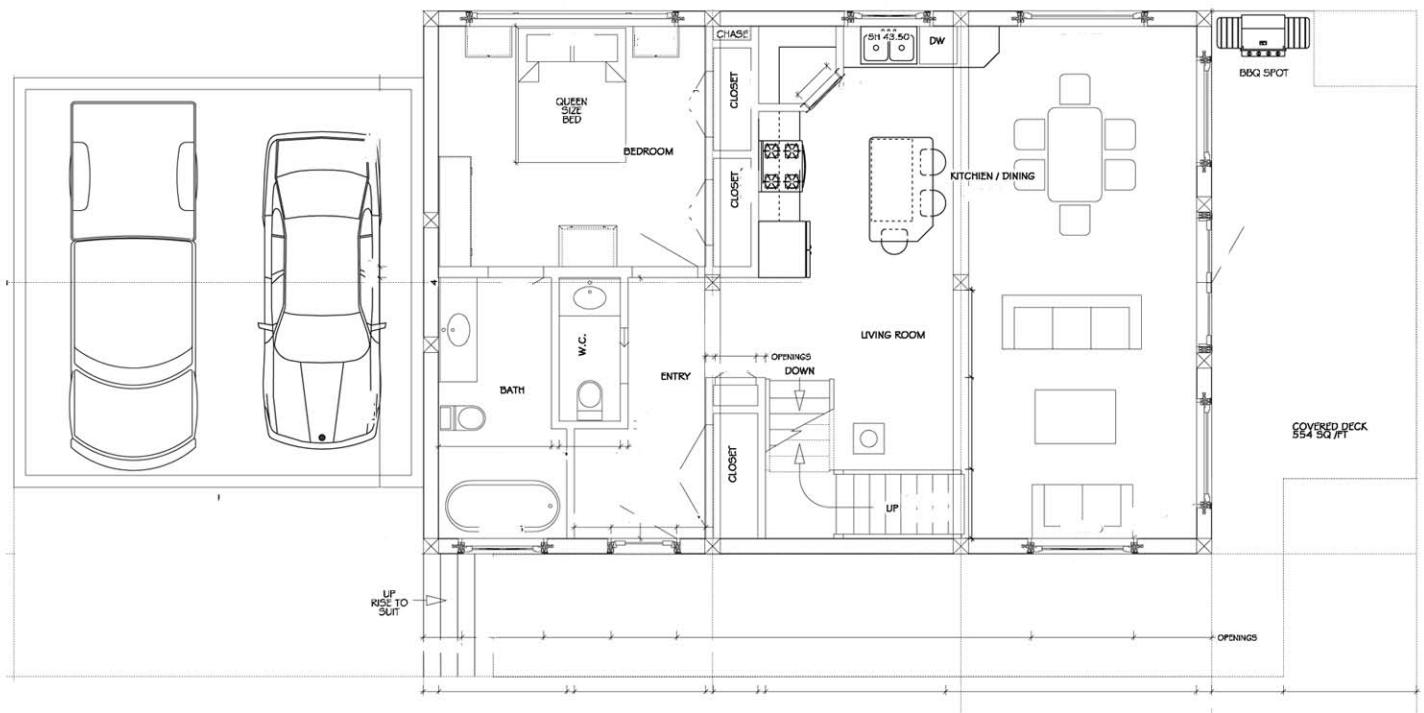
**[www.ZTFrames.com](http://www.ZTFrames.com)**

250.243.0055 | cell: 250.392.0103 | fax 250.243.2419 | [info@ZTFrames.com](mailto:info@ZTFrames.com)

# ZTF Zirnhelt Timber Frames

## *Lac La Hache Home*

### Main Level Floor Plan



*Healthy Homes for Sustainable Living*

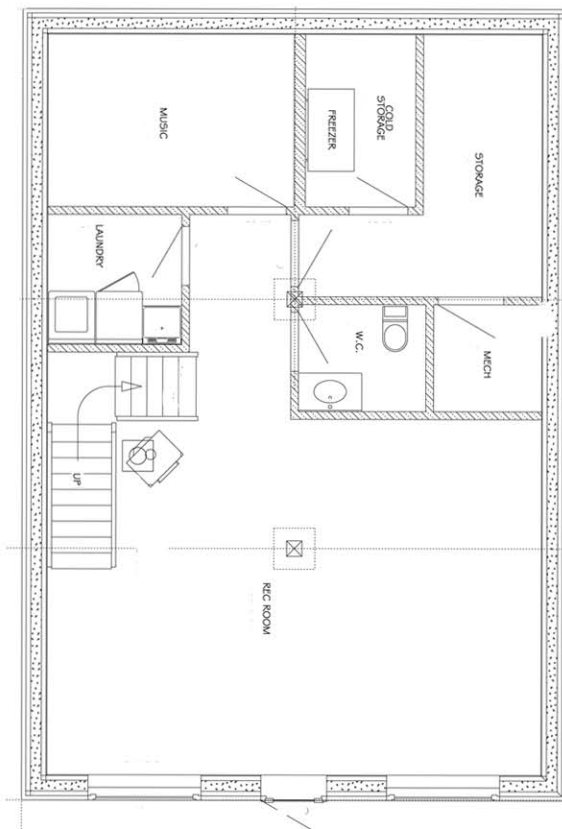
[www.ZTFrames.com](http://www.ZTFrames.com)

250.243.0055 | fax 250.243.2419 | [info@ZTFrames.com](mailto:info@ZTFrames.com)

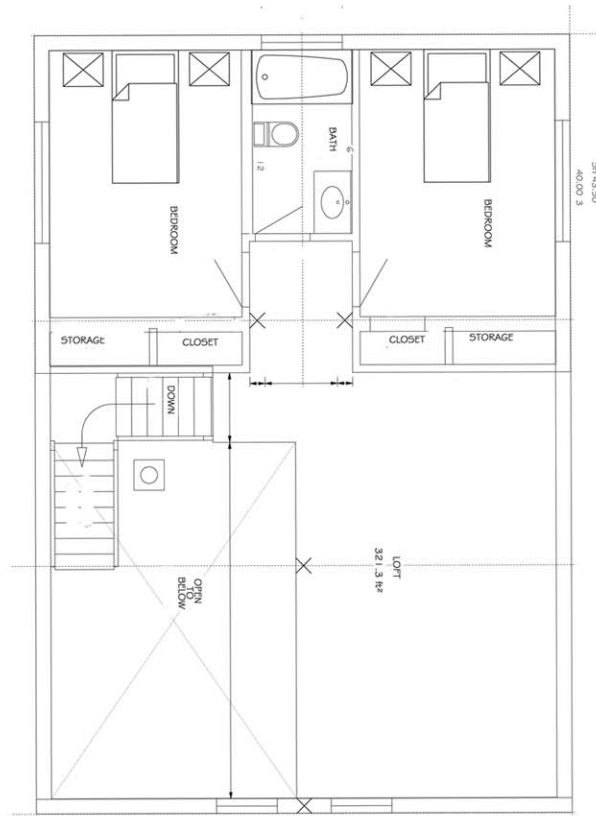
# ZTF Zirnhelt Timber Frames

## *Lac La Hache Home*

### Basement Floor Plan



### Loft Floor Plan



*Healthy Homes for Sustainable Living*

[www.ZTFrames.com](http://www.ZTFrames.com)

250.243.0055 | fax 250.243.2419 | [info@ZTFrames.com](mailto:info@ZTFrames.com)