

# ZTF Zirnhelt Timber Frames

*Sustainable by Design*

## *Pete's Palace*

### *At a Glance:*

<i>Main (24' x 28')</i>	<i>672 sq ft</i>
<i>Loft</i>	<i>336 sq ft</i>
<i>Bsmt</i>	<i>672 sq ft</i>
<i>Bedrooms</i>	<i>3</i>
<i>Bathrooms</i>	<i>3</i>
<i>Total living space</i>	<i>1,680 sq ft</i>
<i>Coverd porches</i>	<i>408 sq ft</i>
<i>Total footprint</i>	<i>1,080 sq ft</i>



*This home designed by: Zirnhelt Timber Frames*

**This compact chalet-style timber frame home is both elegant and efficient. The main floor is 24' x 28' (672 sq. ft.) with a 24'x 14' (336 sq ft) loft (1/2 vaulted ceiling) for a total of 1008 sq. ft. plus a full daylight basement (672 sq. ft.). The large covered porches are perfect for outdoor entertaining or simply letting the kids out to play when it's raining! This design supports several different floor plans depending on your needs. This home can easily incorporate 3 bedrooms plus an office/den or even 4 bedrooms (2 in the loft, one on the main floor and one in the basement) making it a surprisingly spacious "not so big house". Every Zirnhelt Timber Frame is uniquely designed for each customer and carefully hand-crafted with sustainably harvested Douglas fir.**

**Call or email us to start your sustainable building project. Visit our site, meet our crew, and tour a Zirnhelt Timber Frame home.**

**We look forward to working with you!**

---

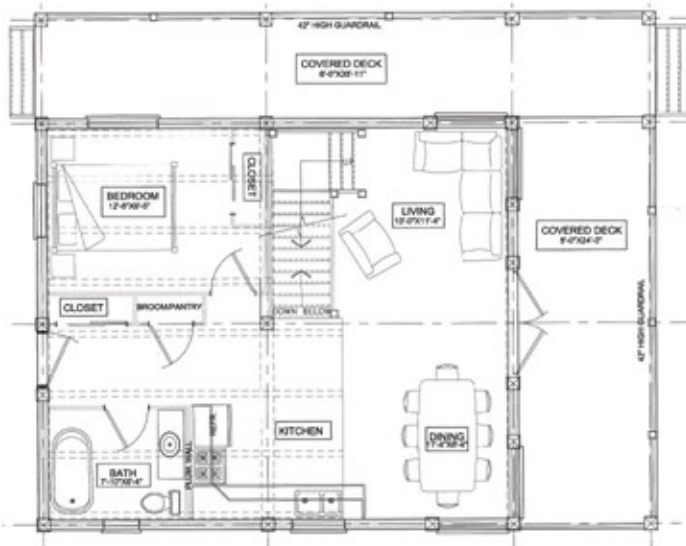
**[www.ZTFrames.com](http://www.ZTFrames.com)**

250.243.0055 | cell: 250.392.0103 | fax 250.243.2419 | [info@ztframes.com](mailto:info@ztframes.com)

# ZTF Zirnhelt Timber Frames

## *Pete's Palace*

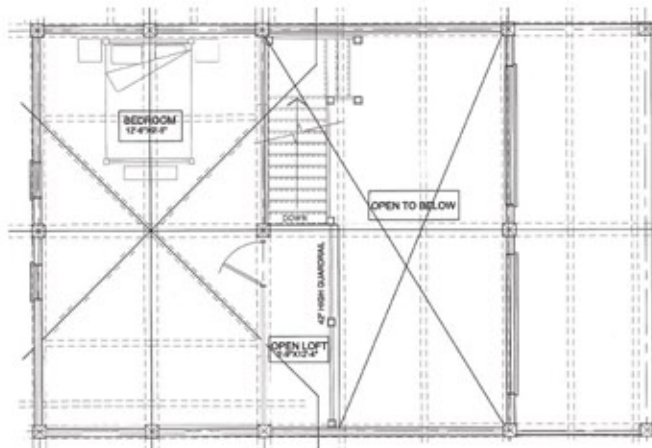
Main Level Floor Plan



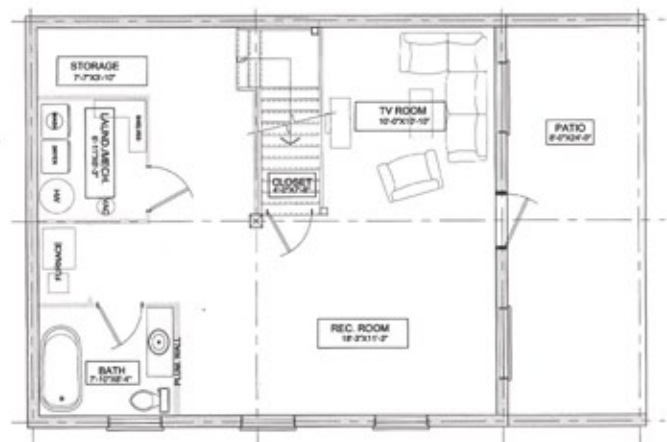
Rear Entrance View



Loft Floor Plan



Basement Floor Plan



*Healthy Homes for Sustainable Living*

[www.ZTFrames.com](http://www.ZTFrames.com)

250.243.0055 | fax 250.243.2419 | [info@ztframes.com](mailto:info@ztframes.com)