

# ZTF Zirnhelt Timber Frames

*Sustainable by Design*

## *Big Lake Timber Home*

### *At a Glance:*

#### *HOUSE*

<i>Main</i>	<i>1,140 sq ft</i>
<i>Daylight Bsmt</i>	<i>1,140 sq ft</i>
<i>Loft</i>	<i>500 sq ft</i>
<i>Total living space</i>	<i>2,780 sq ft</i>
<i>Bedrooms</i>	<i>2-3</i>
<i>Bathrooms</i>	<i>2-3</i>

#### *GARAGE/GUEST SUITE*

<i>Garage 26' x 26</i>	<i>676 sq ft</i>
<i>Suite 20' x 22'</i>	<i>572 sq ft</i>



This home plan designed by: Harrison Design and Zirnhelt Timber Frames



This plan was developed from the “Lakeside Retirement” plan. Both plans have very similar floor plans and living space. The garage/guest suite building is identical. The Big Lake home has no dormers. This greatly reduces the cost of the timber frame and all of the finishing stages (framing, roofing, doors & windows) while still taking in the full view of the lake and retaining the exposed timber ceilings throughout the home. The timber roof system opens up immediately when you enter due to the vaulted entry. The  $\frac{3}{4}$  loft still gives the high vaulted timber frame feeling in the great room while achieving some extra space upstairs. All of the entries are well protected from snow and rain. The side deck running from front to back provides some relief from the afternoon summer sun (west) and a convenient access to summer barbeques on the front deck (without having to go through the house).

Call or email us to start your sustainable building project. Visit our site, meet our crew and tour a Zirnhelt Timber Frame home.

We look forward to working with you!

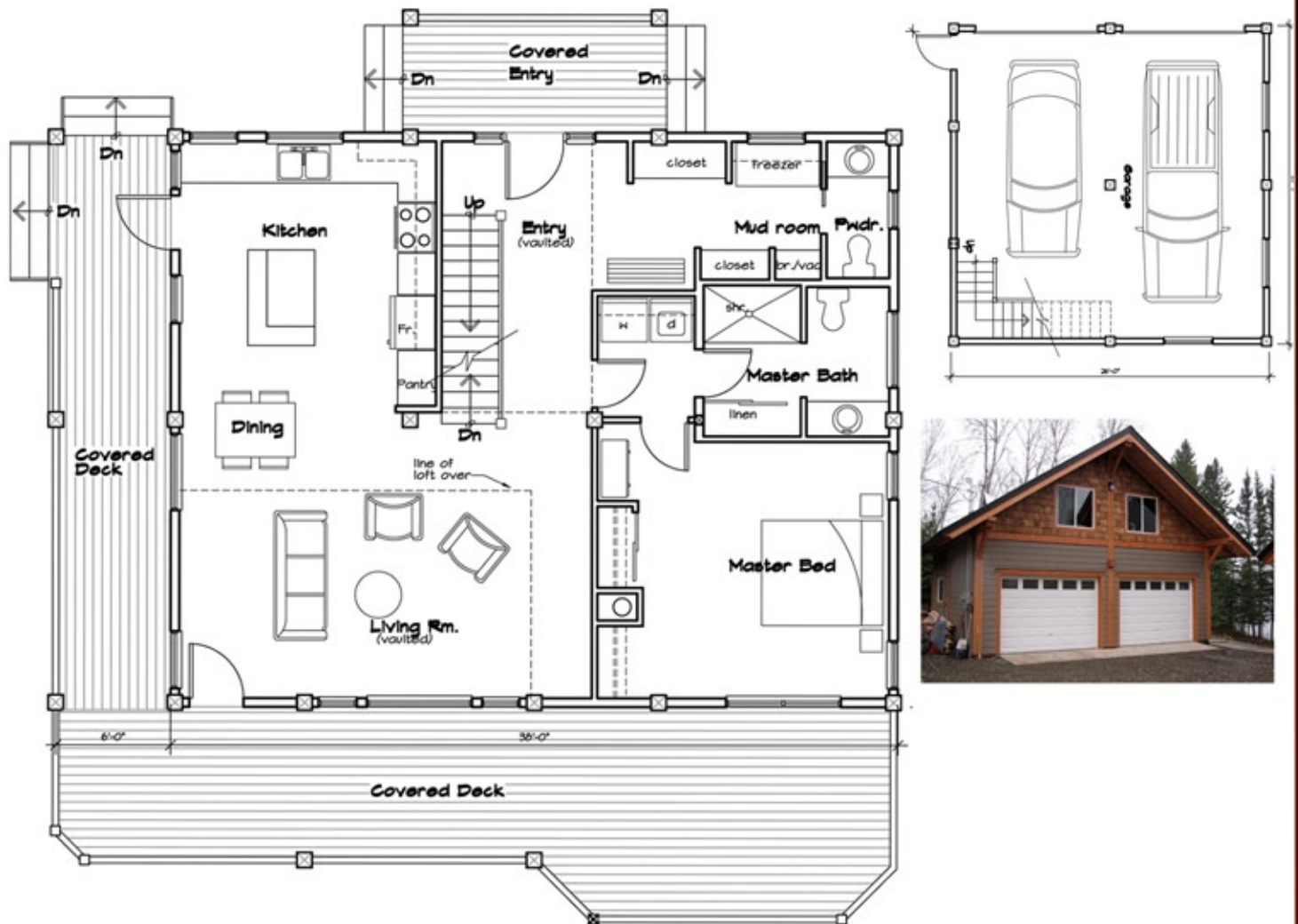
[www.ZTFrames.com](http://www.ZTFrames.com)

250.243.0055 | cell: 250.392.0103 | fax 250.243.2419 | [info@ZTFrames.com](mailto:info@ZTFrames.com)

# ZTF Zirnhelt Timber Frames

## *Big Lake Timber Home*

### Main Level Floor Plan with Garage



*Healthy Homes for Sustainable Living*

[www.ZTFrames.com](http://www.ZTFrames.com)

250.243.0055 | fax 250.243.2419 | [info@ZTFrames.com](mailto:info@ZTFrames.com)

# ZTF Zirnhelt Timber Frames

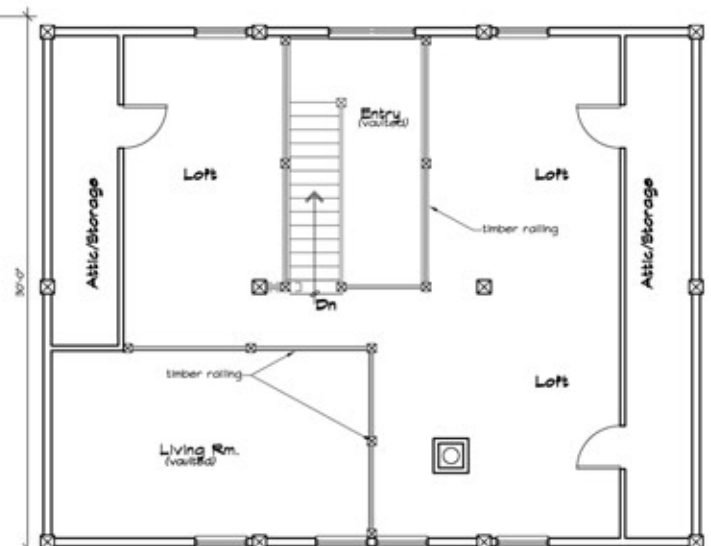
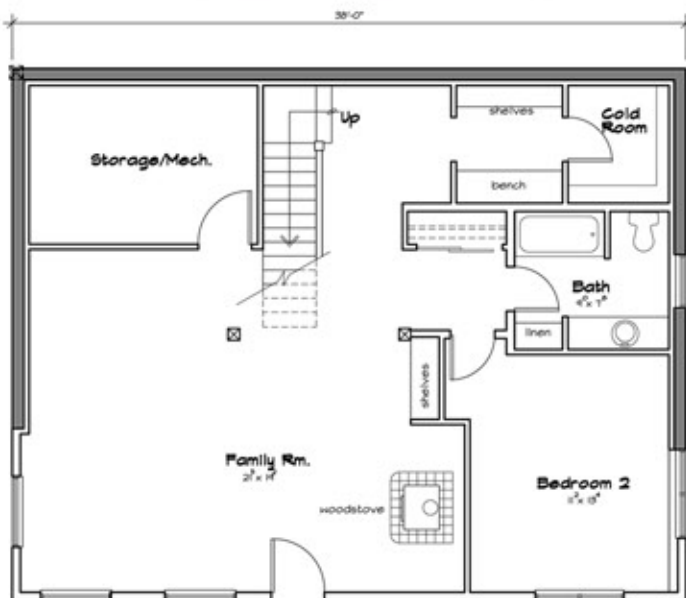
## *Big Lake Timber Home*



Rear Entry View

Lower Level Floor Plan

Loft Floor Plan



*Healthy Homes for Sustainable Living*

[www.ZTFrames.com](http://www.ZTFrames.com)

250.243.0055 | fax 250.243.2419 | [info@ZTFrames.com](mailto:info@ZTFrames.com)