

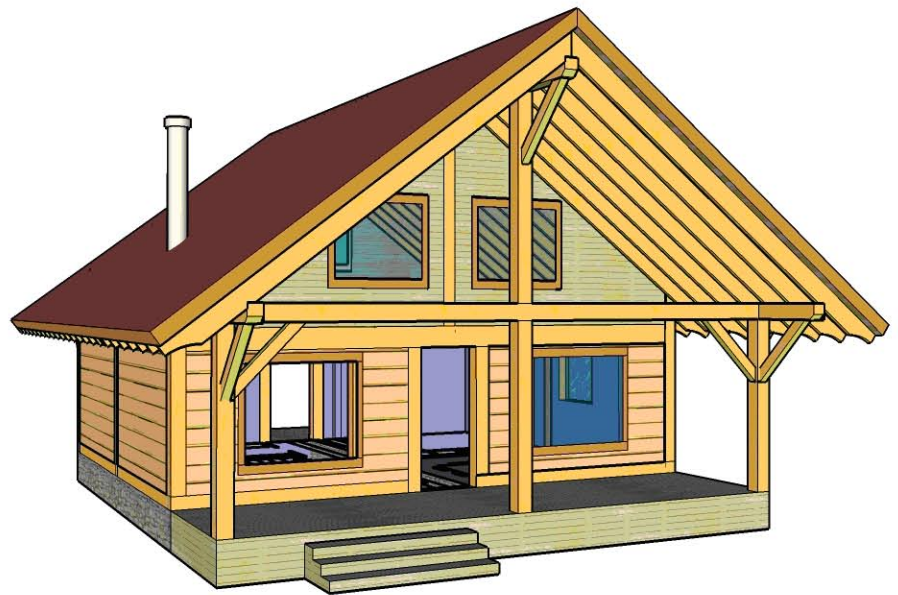
ZTF Zirnhelt Timber Frames

Sustainable by Design

28 x 30 Home

At a Glance:

| | |
|---------------------------|--------------------|
| <i>Main (28' x 30')</i> | <i>840 sq ft</i> |
| <i>Upper</i> | <i>840 sq ft</i> |
| <i>Bedrooms</i> | <i>4</i> |
| <i>Bathrooms</i> | <i>2</i> |
| <i>Total living space</i> | <i>1,680 sq ft</i> |



This home designed by: Zirnhelt Timber Frames

This compact house has a full upstairs allowing for four bedrooms. The simple roof lines and full upstairs help make this an affordable building.

Call or email us to start your sustainable building project. Visit our site, meet our crew and tour a Zirnhelt Timber Frame home.

We look forward to working with you!

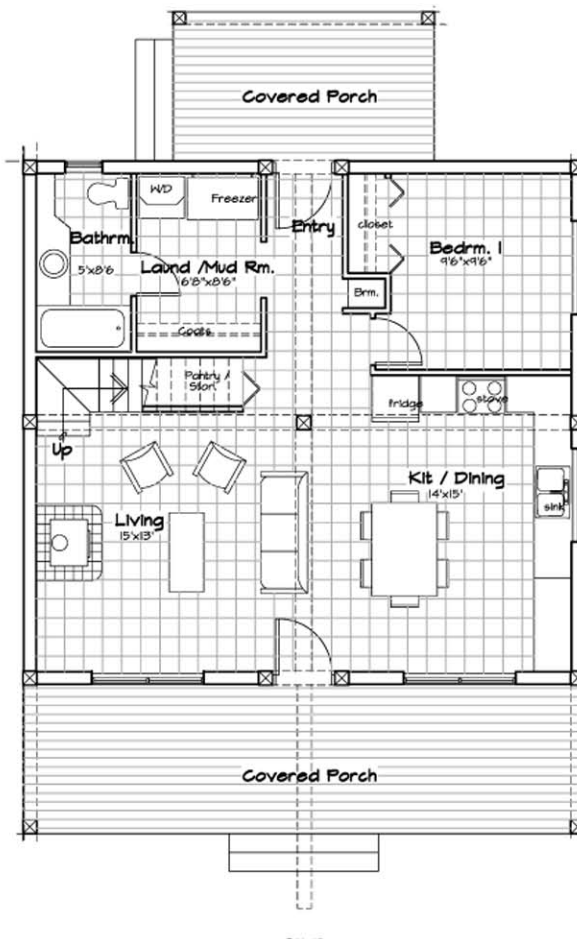
www.ZTFrames.com

250.243.0055 | cell: 250.392.0103 | fax 250.243.2419 | info@ZTFrames.com

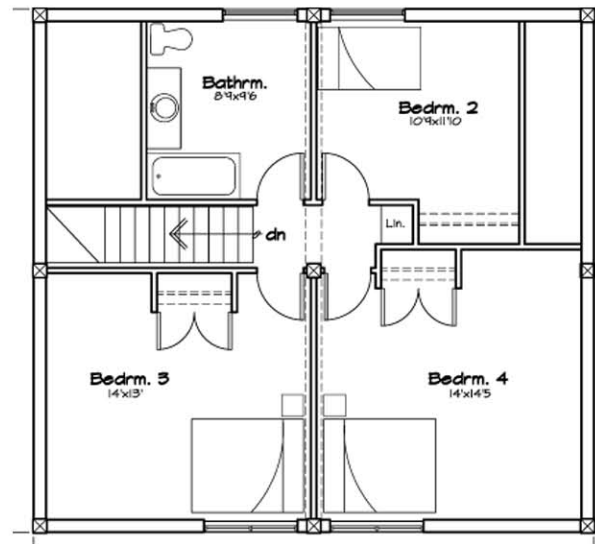
ZTF Zirnhelt Timber Frames

28 x 30 Home

Main Level Floor Plan



Loft Floor Plan



Healthy Homes for Sustainable Living

www.ZTFrames.com

250.243.0055 | fax 250.243.2419 | info@ZTFrames.com