

ZTF Zirnhelt Timber Frames

Gambier Oceanside Cottage

Sustainable by Design



This cabin designed by: Zirnhelt Timber Frames

At a Glance:

<i>Main (14' x 14')</i>	<i>196 sq ft</i>
<i>Sleeping loft (7' x 14')</i>	<i>98 sq ft</i>
<i>Total living space</i>	<i>294 sq ft</i>

The Gambier Island Cottage was barged in and set-up by hand on a steep site overlooking the ocean. The main floor interior is only 14'x 14' but with the loft and the outdoor cooking dining area this small cottage provides a great family holiday base and in the future will serve as a guest house/ beach front barbeque area. A small building near the water combined with a larger home a bit further from the beach helps make great use of the ocean frontage while keeping site disturbance to a minimum.

Call or email us today to design your guest cabin. We look forward to working with you!

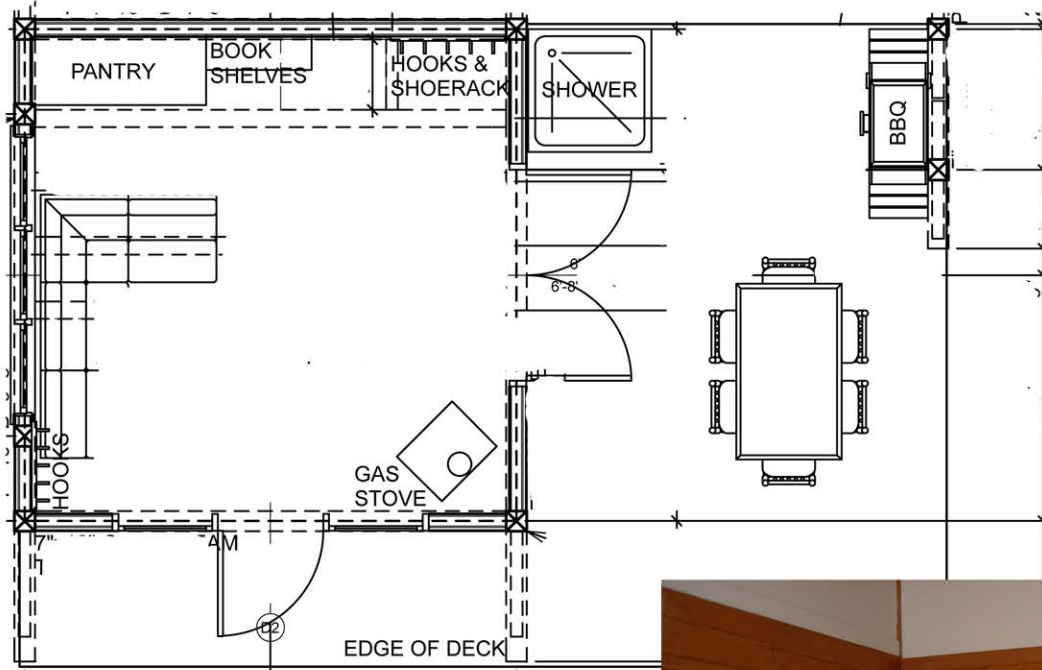
www.ZTFrames.com

250.243.0055 | cell: 250.392.0103 | fax 250.243.2419 | info@ZTFrames.com

ZTF Zirnhelt Timber Frames

Gambier Oceanside Cottage

Main Level Floor Plan



Healthy Homes for Sustainable Living

www.ZTFrames.com

250.243.0055 | fax 250.243.2419 | info@ZTFrames.com