

# ZTF Zirnhelt Timber Frames

*Sustainable by Design*

## *The Winterbrook*

### *At a Glance:*

|                    |             |
|--------------------|-------------|
| Main (26' x 38')   | 936 sq ft   |
| Loft               | 650 sq ft   |
| Bedrooms           | 1-3         |
| Bathrooms          | 1-2         |
| Total living space | 1,586 sq ft |
| Covered decks      | 424 sq ft   |
| Total Footprint    | 1,360 sq ft |



*This plan designed by: Zirnhelt Timber Frames*

With 936 square feet on the main floor and 650 square feet in the upstairs for a total of 1,586 square feet, the Winterbrook is a very comfortable home. Zirnhelt Timber Frames considers the fact that you will likely want to live in your timber frame home as long as possible so we encourage our clients to plan for all the necessities on the main floor and the area taken up by hallways kept to a minimum. This building is truly designed for living with a pantry adjacent to the kitchen, large bathroom with a tub and shower, walk-in closet in the master bedroom. Plenty of glass with exposed beams and a high vaulted ceiling add the magic feeling of being in a classic mountain chalet to this versatile home.

**Call or email us to start your sustainable building project. Visit our site, meet our crew, and tour a Zirnhelt Timber Frame home.**

**We look forward to working with you!**

---

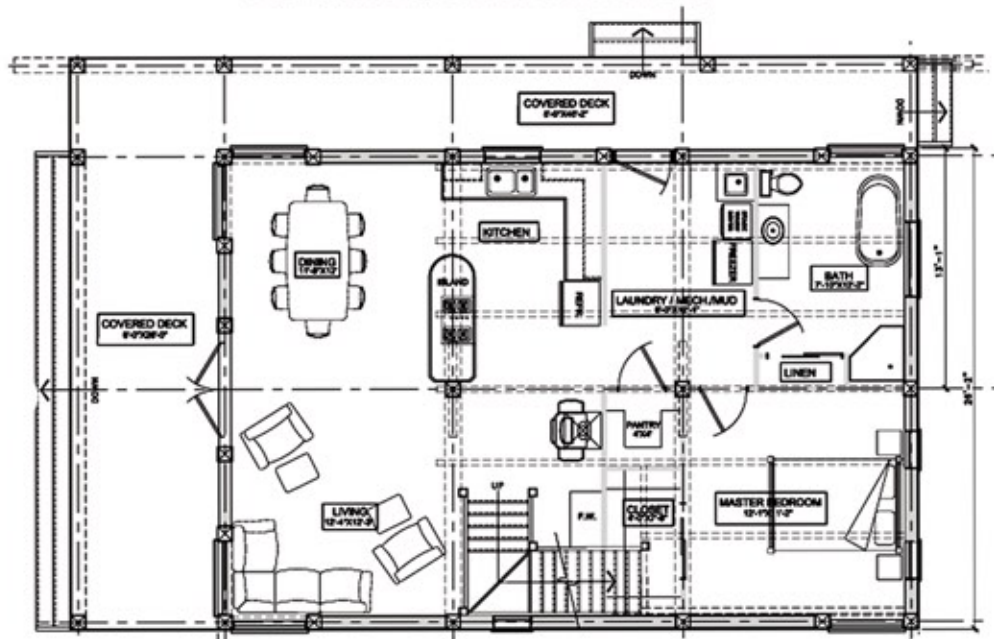
**[www.ZTFrames.com](http://www.ZTFrames.com)**

250.243.0055 | cell: 250.392.0103 | fax 250.243.2419 | [info@ZTFrames.com](mailto:info@ZTFrames.com)

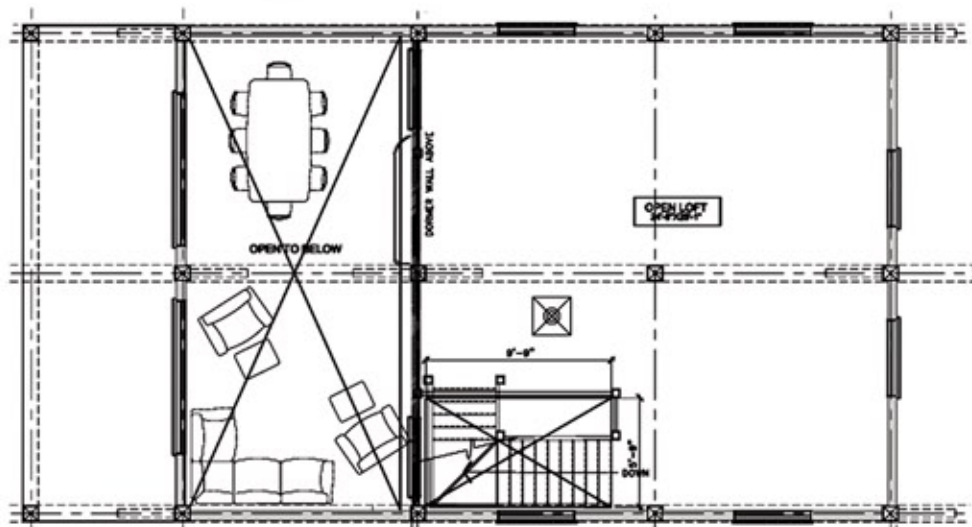
# ZTF Zirnhelt Timber Frames

## *The Winterbrook*

Main Level Floor Plan



Upper Level Floor Plan



*Healthy Homes for Sustainable Living*

[www.ZTFrames.com](http://www.ZTFrames.com)

250.243.0055 | fax 250.243.2419 | [info@ZTFrames.com](mailto:info@ZTFrames.com)