

ZTF Zirnhelt Timber Frames

Sustainable by Design

Tyee Carriage House

At a Glance:

Main (36' x 36') 1,296 sq ft
Upper Level 1,040 sq ft

Lean-to
(12' x 36') 432 sq ft



This plan designed by: Harrison Design



The Tyee Carriage House has a roomy 2 car garage with extra shop space on the lower level. The upstairs is perfect for wood working, an art/craft studio or guest accommodation. The large gables provide with plenty of natural light, views in each direction and a covered balcony. The side lean-to adds covered space for your boat, snow machines, hay bales, firewood or extra vehicles.

Call or email us to start your sustainable building project. Visit our site, meet our crew and tour a Zirnhelt Timber Frame home.

We look forward to working with you!

www.ZTFrames.com

250.243.0055 | cell: 250.392.0103 | fax 250.243.2419 | info@ZTFrames.com

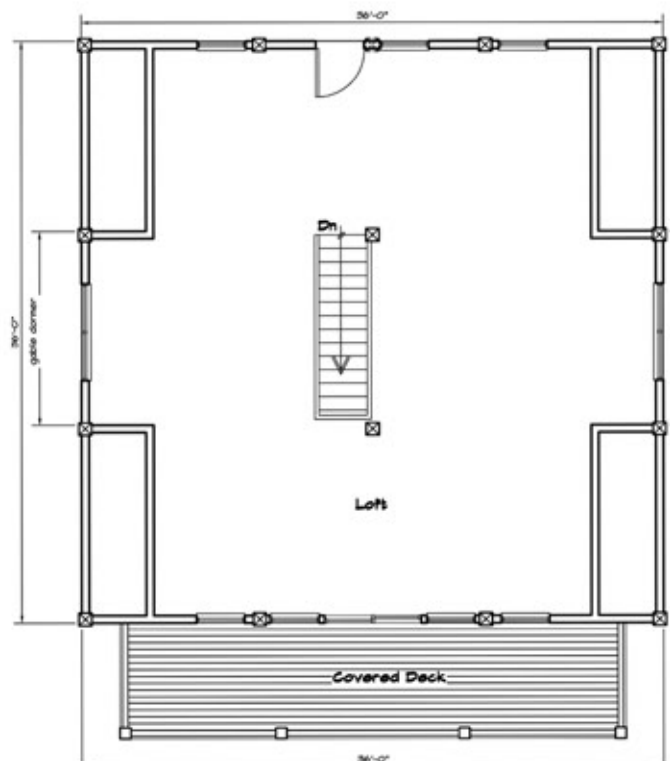
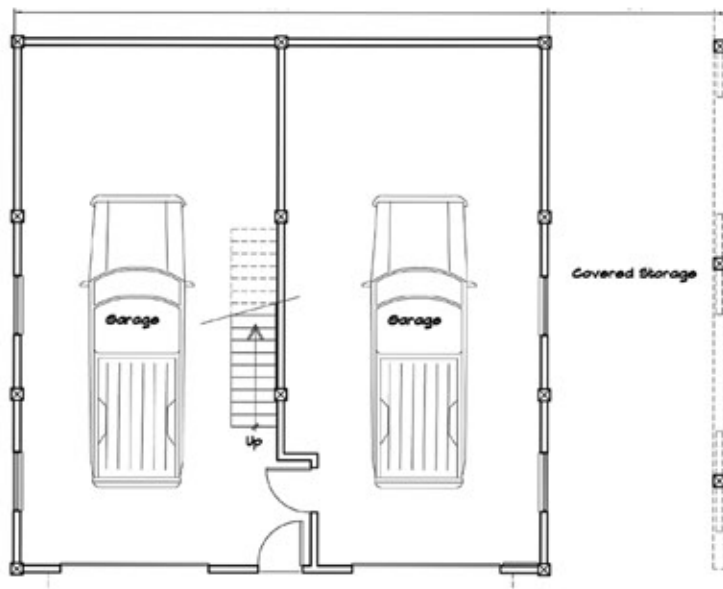
ZTF Zirnhelt Timber Frames

Tye Carriage House



Main Level

Upper Level



Healthy Homes for Sustainable Living

www.ZTFrames.com

250.243.0055 | fax 250.243.2419 | info@ZTFrames.com