

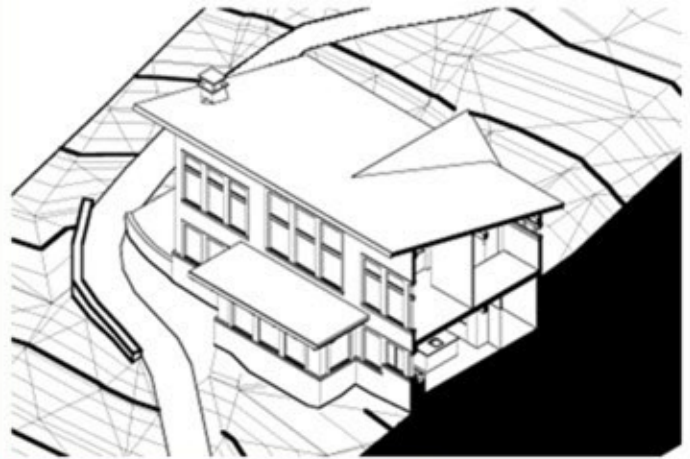
# ZTF Zirnhelt Timber Frames

*Sustainable by Design*

## *South Chilcotin Mountain Getaway*

### *At a Glance:*

<i>Lower</i>	<i>1,430 sq ft</i>
<i>Upper</i>	<i>750 sq ft</i>
<i>Bedrooms</i>	<i>3</i>
<i>Bathrooms</i>	<i>3</i>
<i>Total living space</i>	<i>2,180 sq ft</i>



*This home designed by: I-Design Graphics*



**A spacious, light and open home designed to fit into the landscape on a steep side hill with a nearly all-glass front oriented to a stunning lake and mountain back drop. This home design efficiently combines modern conveniences, high vaulted ceilings and cozy spaces in a modest 2,180 square foot living space.**

**Call or email us to start your sustainable building project. Visit our site, meet our crew, and tour a Zirnhelt Timber Frame home.**



**Construction Image**

**We look forward to working with you!**

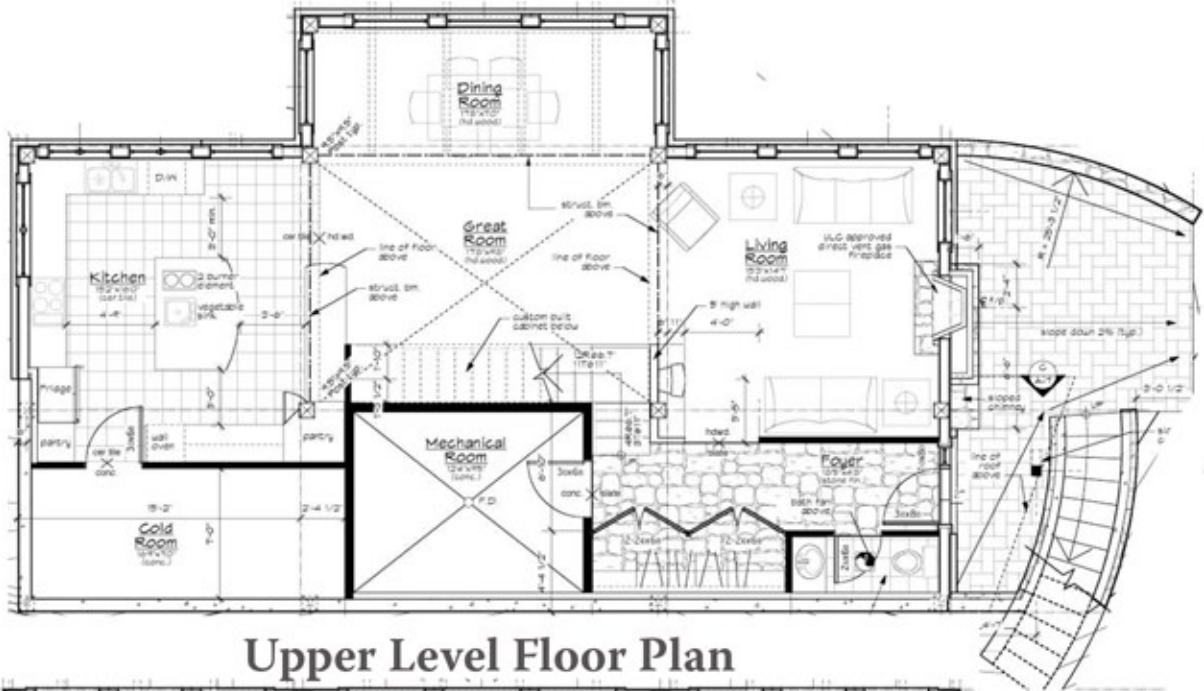
**[www.ZTFrames.com](http://www.ZTFrames.com)**

250.243.0055 | cell: 250.392.0103 | fax 250.243.2419 | [info@ZTFrames.com](mailto:info@ZTFrames.com)

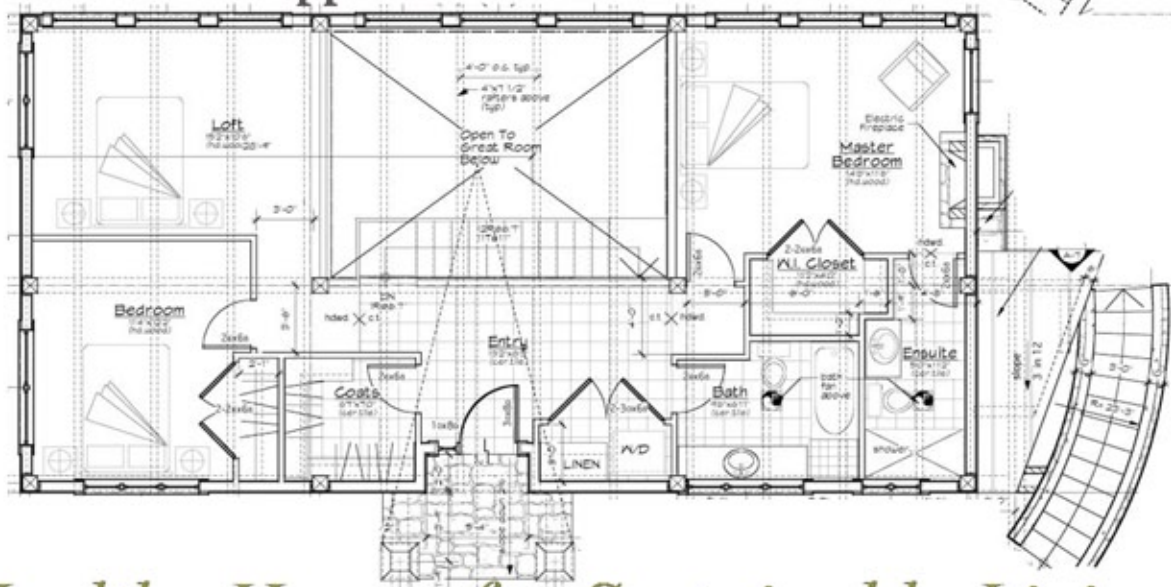
# ZTF Zirnhelt Timber Frames

## South Chilcotin Mountain Getaway

### Lower Level Floor Plan



### Upper Level Floor Plan



*Healthy Homes for Sustainable Living*

[www.ZTFrames.com](http://www.ZTFrames.com)

250.243.0055 | fax 250.243.2419 | info@ZTFrames.com