

# ZTF Zirnhelt Timber Frames

*Sustainable by Design*

## *S&J Country Cottage*

### *At a Glance:*

<i>Main</i>	<i>572 sq ft</i>
<i>Loft</i>	<i>286 sq ft</i>
<i>Total living space</i>	<i>858 sq ft</i>
<i>Bedrooms</i>	<i>1</i>
<i>Bathrooms</i>	<i>1.5</i>
<i>Covered Porches</i>	<i>176 sq ft</i>
<i>Total footprint</i>	<i>1,034 sq ft</i>



Designed by: Zirnhelt Timber Frames

**This cottage was built on the Zirnhelt Ranch for owner Sam Zirnhelt and his wife Jill in 2005.**

**With only 572 sq ft on the main floor, high ceilings were needed to give the feeling of a full sized house. Vertical space has been used to the fullest by adding taller cupboards in the kitchen and bathroom. The loft serves as the master bedroom and has a half bathroom in it. In 2010 this home will receive an addition on the south wall.**

**Call or email us to start your sustainable building project. Visit our site, meet our crew and tour a Zirnhelt Timber Frame home.**

**We look forward to working with you!**

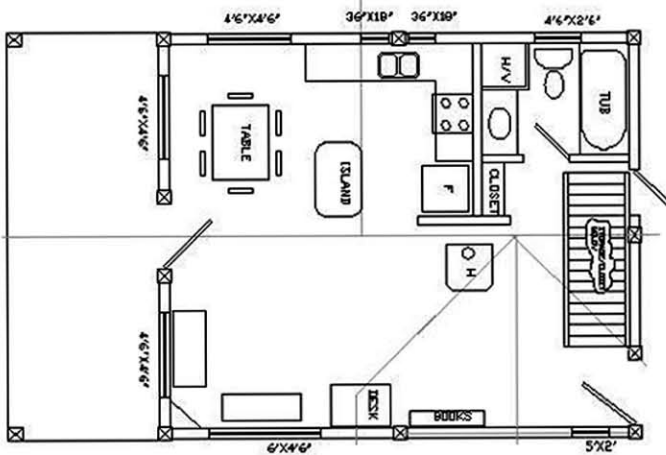
---

**[www.ZTFrames.com](http://www.ZTFrames.com)**

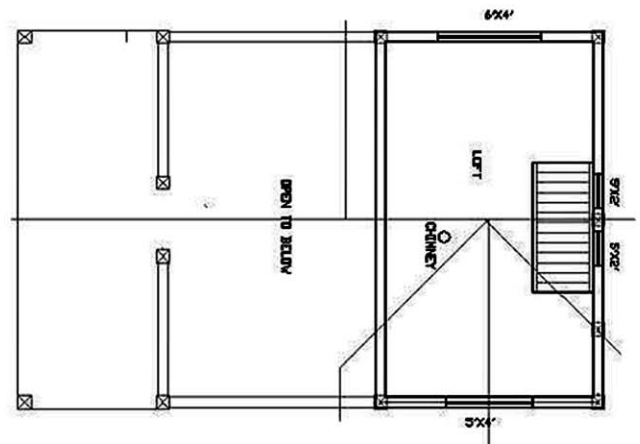
250.243.0055 | cell: 250.392.0103 | fax 250.243.2419 | [info@ZTFrames.com](mailto:info@ZTFrames.com)

# ZTF Zirnhelt Timber Frames

## *S&J Country Cottage*



Main Level Floor Plan



Loft Floor Plan

*Healthy Homes for Sustainable Living*

[www.ZTFrames.com](http://www.ZTFrames.com)

250.243.0055 | fax 250.243.2419 | [info@ZTFrames.com](mailto:info@ZTFrames.com)