

ZTF Zirnhelt Timber Frames

Sustainable by Design

Parker Lake Cottage

At a Glance:

<i>Main</i>	<i>576 sq ft</i>
<i>Loft</i>	<i>234 sq ft</i>
<i>Total living space</i>	<i>810 sq ft</i>
<i>Bedrooms</i>	<i>1</i>
<i>Bathrooms</i>	<i>1</i>



Designed by: Zirnhelt Timber Frames

The Parker Lake is one of the smallest cottages we've built that has everything including a staking washer and dryer on the main floor. To keep costs down, the front deck is only partially covered by a 6' overhang. Taller side walls give extra head room in the loft which has a single shed dormer.

Call or email us to start your sustainable building project. Visit our site, meet our crew and tour a Zirnhelt Timber Frame home.

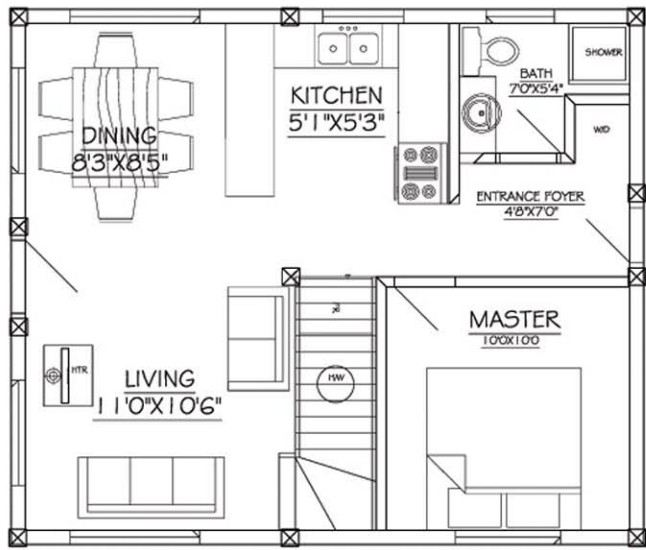
We look forward to working with you!

www.ZTFrames.com

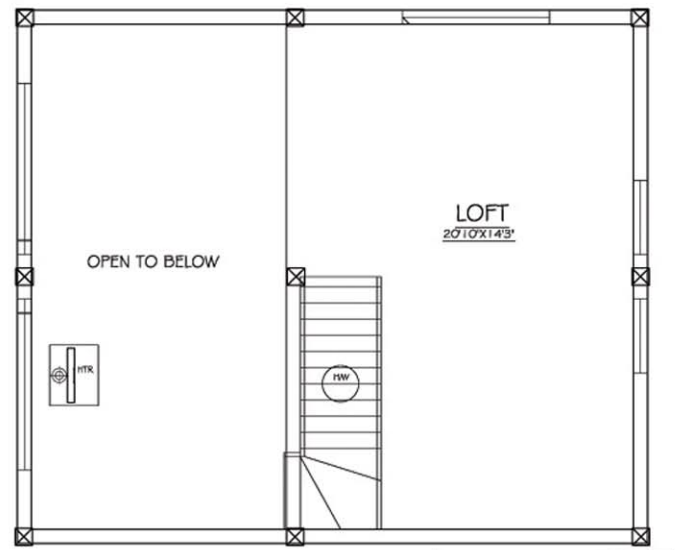
250.243.0055 | cell: 250.392.0103 | fax 250.243.2419 | info@ZTFrames.com

ZTF Zirnhelt Timber Frames

Parker Lake Cottage



Main Level Floor Plan



Loft Floor Plan

Healthy Homes for Sustainable Living

www.ZTFrames.com

250.243.0055 | fax 250.243.2419 | info@ZTFrames.com