

ZTF Zirnhelt Timber Frames

Sustainable by Design

The Northern Classic

At a Glance:

Main (32' x 32')	1,024 sq ft
Upper	384 sq ft
Bedrooms	1
Bathrooms	1
Total living space	1,408 sq ft
Covered decks	530 sq ft
Total footprint	1,554 sq ft



This home designed by: Zirnhelt Timber Frames and Hans Winter Design

This 32' x 32' home was designed to make the magic of a hand-crafted timber frame home affordable. This is a key pillar of sustainability and something we strive to achieve in every frame we design and build. Classic Zirnhelt features include the large covered porches, big roof overhangs and careful use of space.

As a retirement home option, it works well with all the key elements on the main floor. The loft can be left open or incorporate one or two more bedrooms. No dormers really brings the cost down and you'll be surprised how much space there is upstairs with our 11' high side-walls. If you require more space, adding a full basement to this plan may be a good option.

Call or email us to start your sustainable building project. Visit our site, meet our crew, and tour a Zirnhelt Timber Frame home.

We look forward to working with you!

www.ZTFrames.com

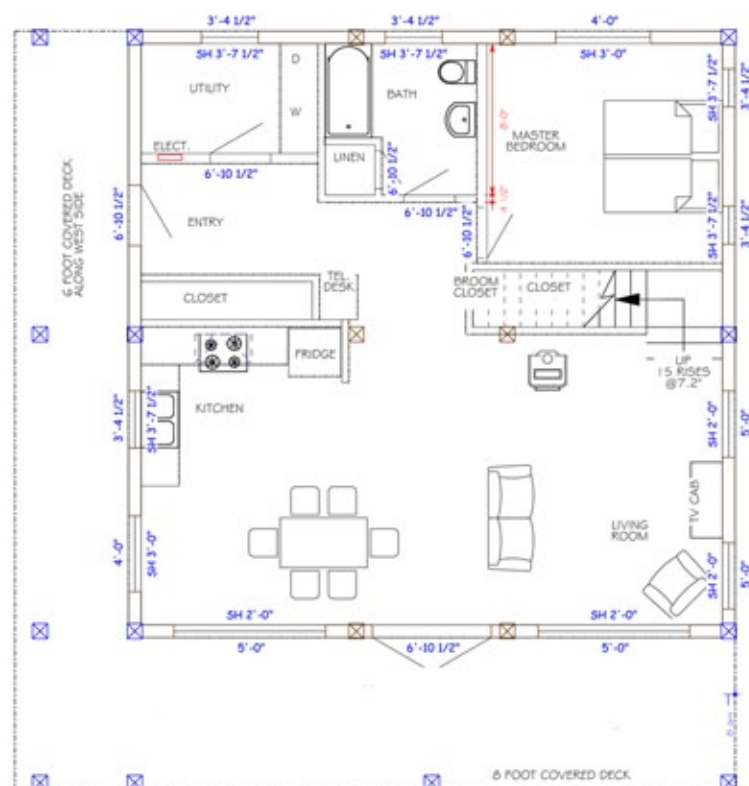
250.243.0055 | cell: 250.392.0103 | fax 250.243.2419 | info@ZTFrames.com

ZTF Zirnhelt Timber Frames

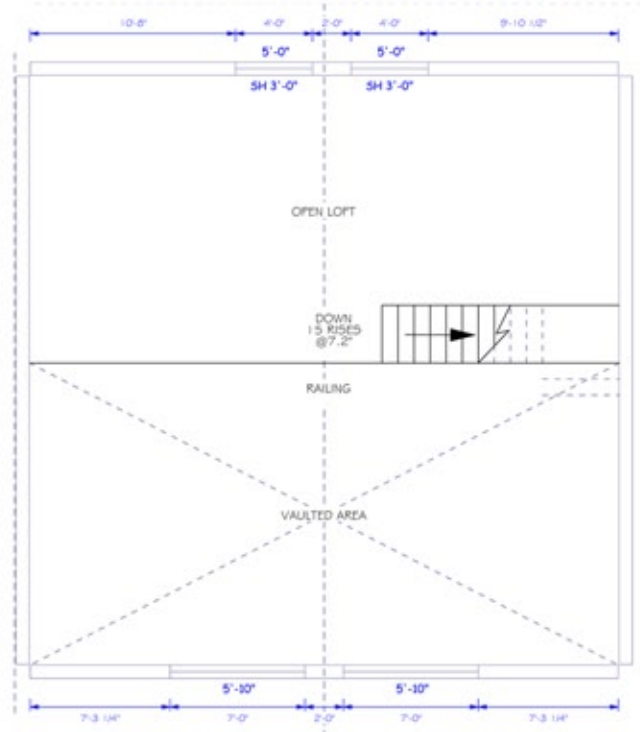
The Northern Classic



Main Level Floor Plan



Loft Floor Plan



Healthy Homes for Sustainable Living

www.ZTFrames.com

250.243.0055 | fax 250.243.2419 | info@ZTFrames.com