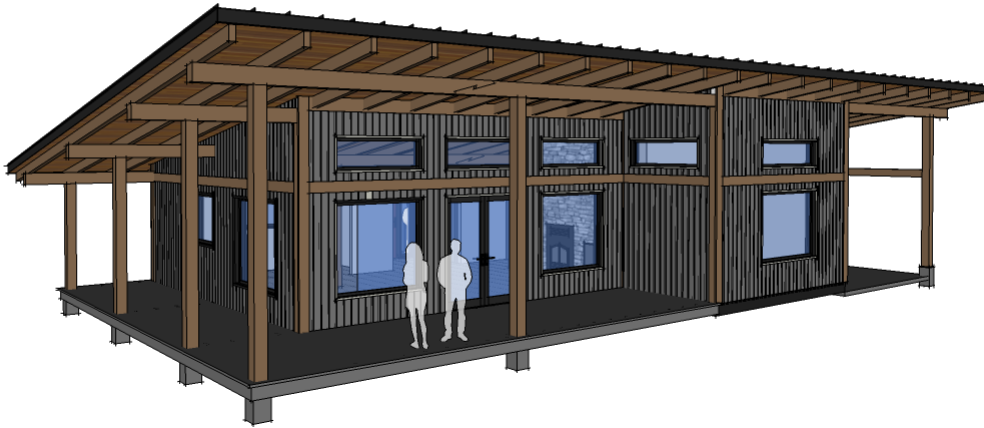




# Zirnhelt Timber Frames

## *Sustainable by Design*

### *Mahood Lake*



#### ***At a Glance:***

*Bedrooms: 1 (optional 2<sup>nd</sup> bedroom)*

*Bathrooms: 1*

*Main 1,136 sq. ft.*

*Total Living Space 1,136 sq ft*

This modern west-coast single pitch cottage is designed for a high level of pre-fabrication while maintaining options for custom features. The walls leave our shop with windows and siding installed and pre-stained. Once on site, this allows for an extremely fast process to weather-tight. In under two weeks your home is ready for Home Warranty coverage. The base design has 8" walls with minimal thermal bridging. The wall panels and roof can be customized for any level of energy efficiency. If you need more space, consider this plan on a full basement which could add 2 bedrooms, more storage and a rec room making it a comfortable family or retirement home.

*Call or email us to start your sustainable building project. Visit our site, meet the crew, and tour a Zirnhelt Timber Frame home*

[www.ZTFrames.com](http://www.ZTFrames.com) | 250.296.3499 | [info@ZTFrames.com](mailto:info@ZTFrames.com)

# ZTF

# Zirnhelt Timber Frames

## Mahood Lake

