

# ZTF Zirnhelt Timber Frames

*Sustainable by Design*

## *Hillside Holiday Home*

### *At a Glance:*

Main (32' x 28')	896 sq ft
Upper	600 sq ft
Bedrooms	2
Bathrooms	2

*Total living space 1,496 sq ft*



This home plan designed by: Zirnhelt Timber Frames & Hans Winter Design

This plan was designed as a holiday home when all the kids are still around but with enough space to have them come back to visit when you retire. The foundation plan reflects the goal of minimal disturbance to the interior old-growth forest in which it is set, yet anchors solidly to the steep slope to secure the magnificent view of the impressive Quesnel Lake for generations to come. The bedrooms are upstairs to keep the main floor open. Despite its small footprint, the main floor is spacious. This effect is amplified by plenty of glass and deck space reaching through the trees toward the lake.

Call or email us to start your sustainable building project. Visit our site, meet our crew, and tour a Zirnhelt Timber Frame home.

We look forward to working with you!

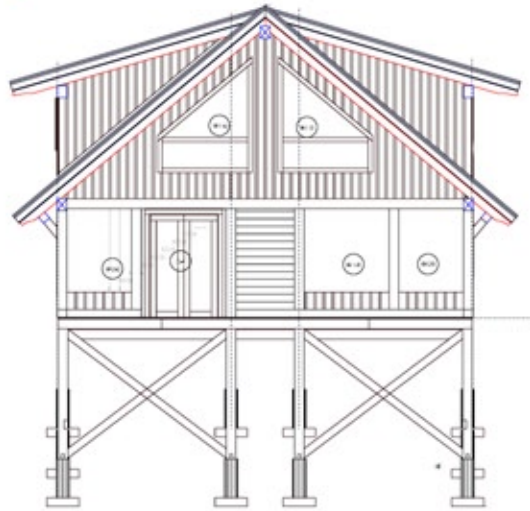
---

[www.ZTFrames.com](http://www.ZTFrames.com)

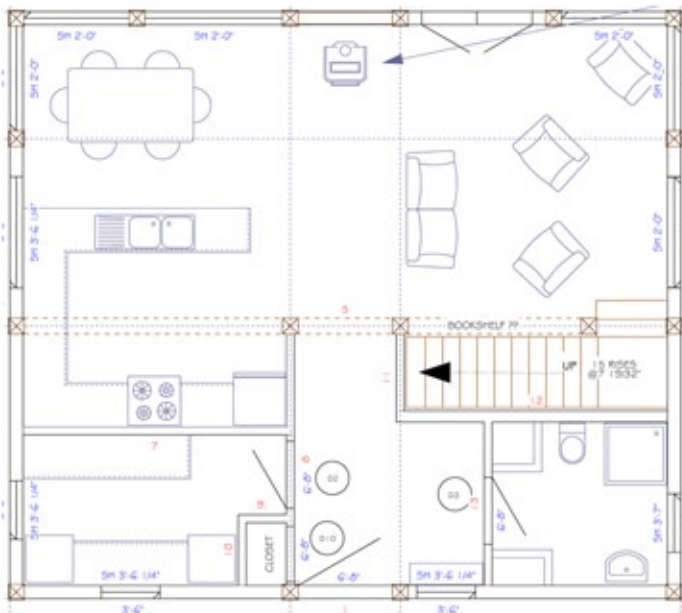
250.243.0055 | cell: 250.392.0103 | fax 250.243.2419 | [info@ZTFrames.com](mailto:info@ZTFrames.com)

# ZTF Zirnhelt Timber Frames

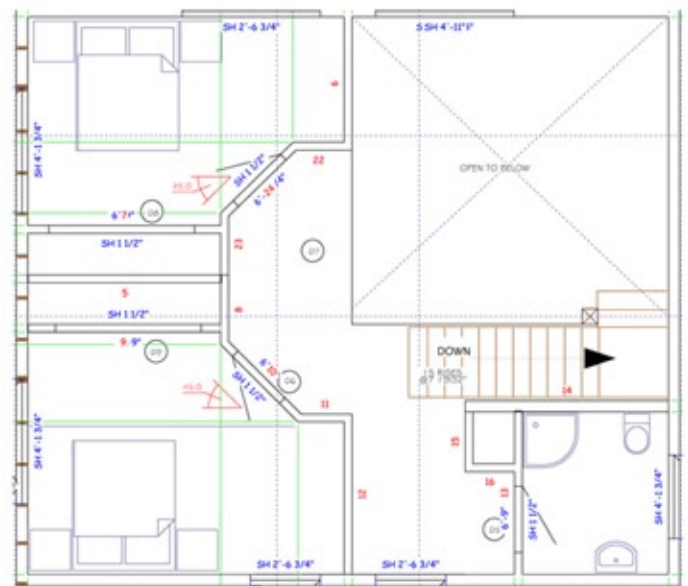
## *Hillside Holiday Home*



**Main Level Floor Plan**



**Loft Floor Plan**



*Healthy Homes for Sustainable Living*

[www.ZTFrames.com](http://www.ZTFrames.com)

250.243.0055 | fax 250.243.2419 | [info@ZTFrames.com](mailto:info@ZTFrames.com)