

ZTF Zirnhelt Timber Frames

Sustainable by Design

Harrison Lake Retreat

At a Glance:

Main	1,024 sq ft
Upper	600 sq ft
Bedrooms	2
Bathrooms	2
Total living space	1,624 sq ft



This home designed by: Zirnhelt Timber Frames and RCM CAD Design

R.C.M. CAD
DESIGN DRAFTING LTD.

The Harrison Lake Retreat is another spacious feeling Zirnhelt timber frame with a small footprint. With the luxury of a more moderate climate than many of the locations we build in, this home enjoys a breathtaking view with enough glass to take it all in. The detached garage with guest suite above overlooks the main house with an amazing view of its own and affords a luxuriant privacy to visiting family and friends.

Call or email us to start your sustainable building project. Visit our site, meet our crew, and tour a Zirnhelt Timber Frame home.

We look forward to working with you!

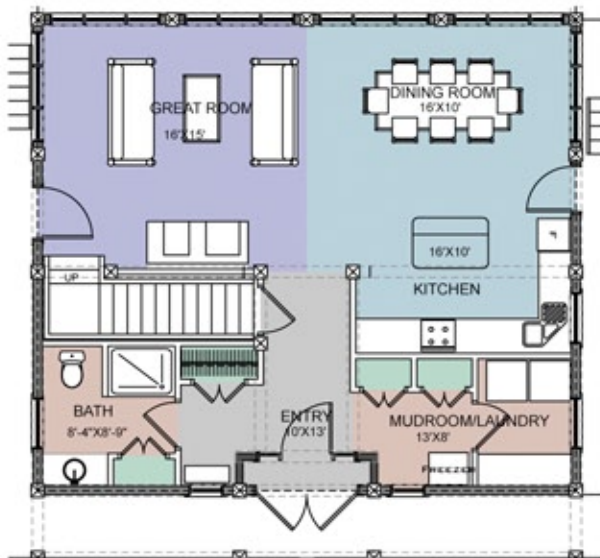
www.ZTFrames.com

250.243.0055 | cell: 250.392.0103 | fax 250.243.2419 | info@ZTFrames.com

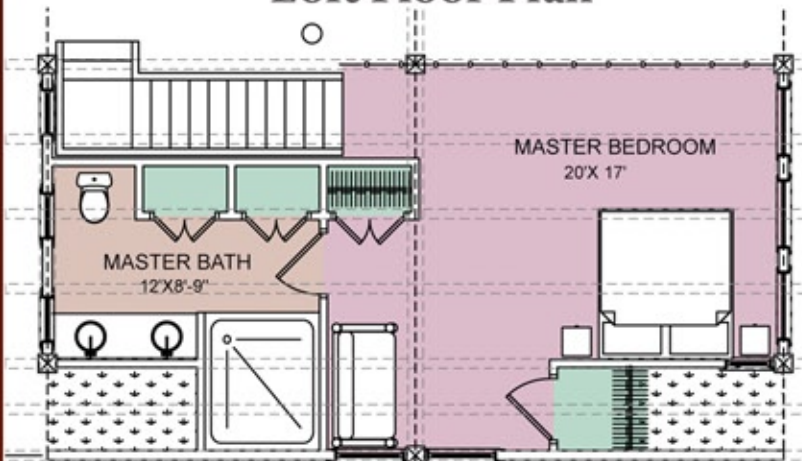
ZTF Zirnhelt Timber Frames

Harrison Lake Retreat

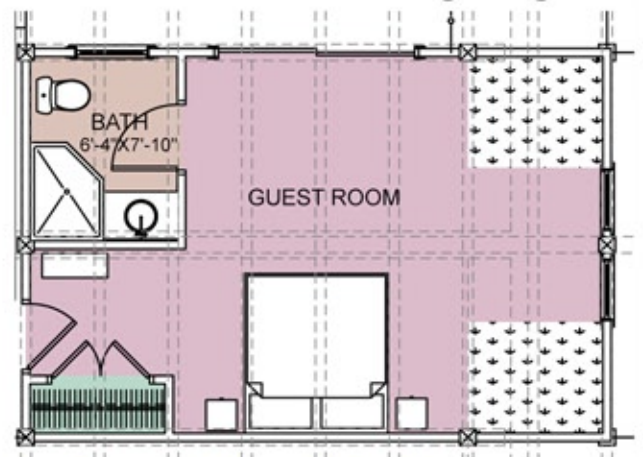
Main Level Floor Plan



Loft Floor Plan



Guest room above garage



Healthy Homes for Sustainable Living

www.ZTFrames.com

250.243.0055 | fax 250.243.2419 | info@ZTFrames.com