

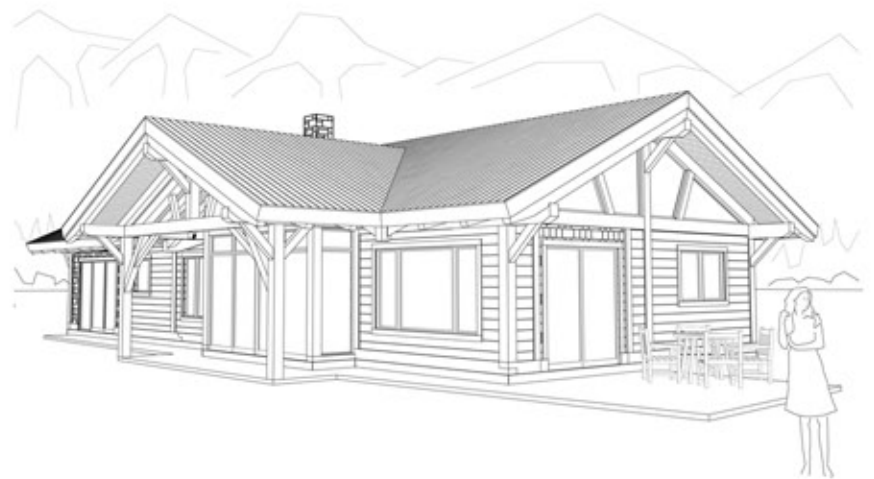
ZTF Zirnhelt Timber Frames

Sustainable by Design

The Glenorchy

At a Glance:

<i>Dimensions</i>	<i>25' x 60'</i>
<i>Main</i>	<i>1,500 sq ft</i>
<i>Bedrooms</i>	<i>4</i>
<i>Bathrooms</i>	<i>2</i>
<i>Total living space</i>	<i>1,500 sq ft</i>



This home plan designed by: EcoCentric Design & Zirnhelt Timber Frames



The Glenorchy rests in a majestic valley near Middle Earth (in the heart of New Zealand's South Island). As this location is such an incredible tourist attraction 4 bedrooms were a necessity (along with a bit of tenting room on the back lawn for wandering Canadian timber framers!). It was a pleasure to work with owners Iain and Caroline Macdonald, to create one of the first timber frames in the area and likely the first timber frame with solid squared timber infill walls in New Zealand.

Call or email us to start your sustainable building project. Visit our site, meet our crew, and tour a Zirnhelt Timber Frame home.

We look forward to working with you!

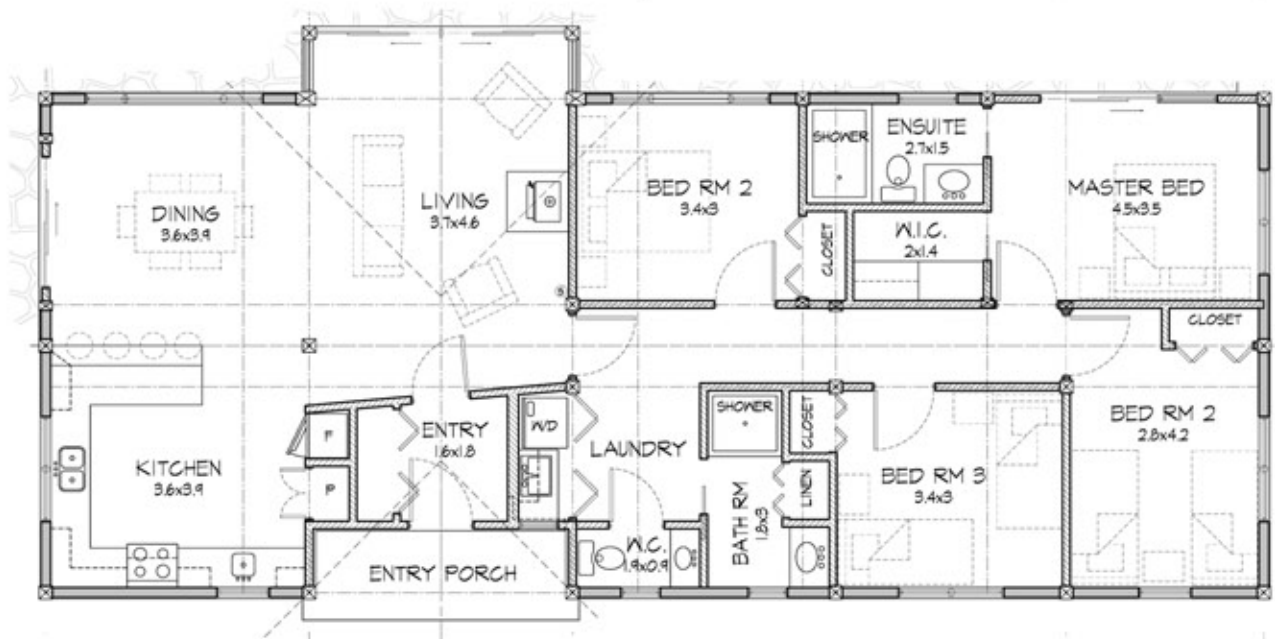
www.ZTFrames.com

250.243.0055 | cell: 250.392.0103 | fax 250.243.2419 | info@ZTFrames.com

ZTF Zirnhelt Timber Frames

The Glenorchy

Main Level Floor Plan



Healthy Homes for Sustainable Living

www.ZTFrames.com

250.243.0055 | fax 250.243.2419 | info@ZTFrames.com