

# ZTF Zirnhelt Timber Frames

*Sustainable by Design*

## *Chilcotin Hunting Cabin*

### *At a Glance:*

Main	396 sq ft
1/2 sleeping loft	198
Total living space	594 sq ft
Bedrooms - optional on main & loft	
Bathrooms	1
Covered Porches	268 sq ft
Total footprint	572 sq ft



Designed by: Zirnhelt Timber Frames

This 18 x 22 cabin is perfect for weekends at the lake or as a guest house on your property. By putting the sleeping quarters in the loft, the main floor can be left open.

The shed roof on the back porch provides extra covered porch and a mechanical/mudroom. As this cabin was built off-grid, a water tank, propane heater and solar system were housed in the mechanical room.



Rear view

Call or email us to start your sustainable building project. Visit our site, meet our crew and tour a Zirnhelt Timber Frame home.

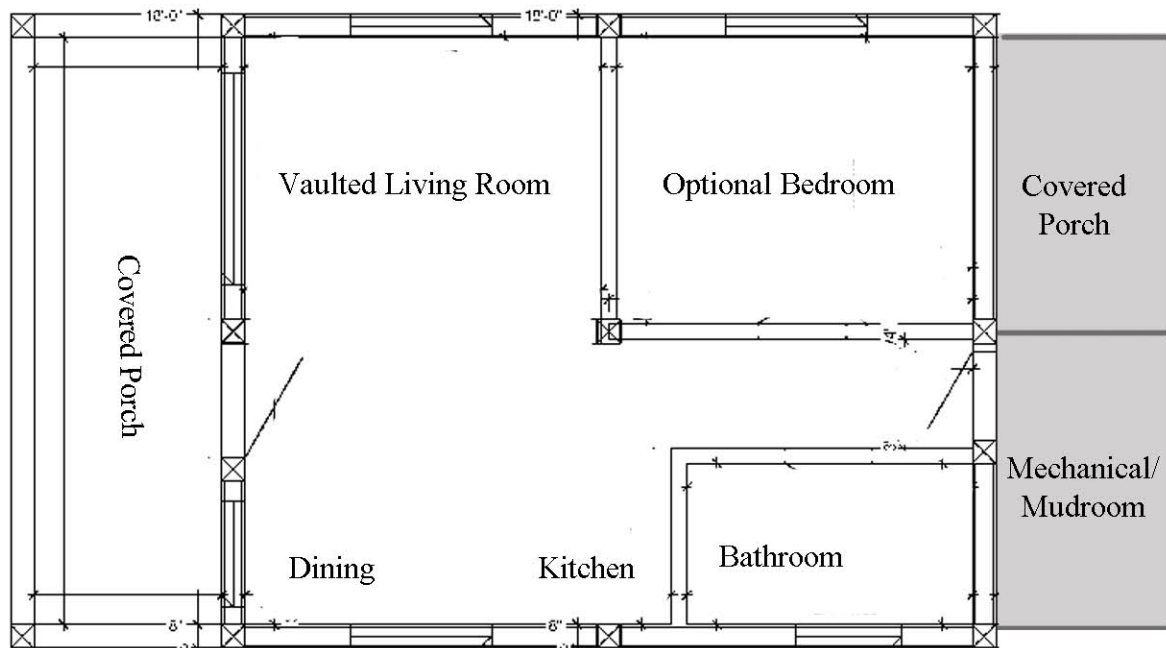
We look forward to working with you!

[www.ZTFrames.com](http://www.ZTFrames.com)

250.243.0055 | cell: 250.392.0103 | fax 250.243.2419 | [info@ZTFrames.com](mailto:info@ZTFrames.com)

# ZTF Zirnhelt Timber Frames

## *Chilcotin Hunting Cabin*



Main Level Floor Plan

*Healthy Homes for Sustainable Living*

[www.ZTFrames.com](http://www.ZTFrames.com)

250.243.0055 | fax 250.243.2419 | [info@ZTFrames.com](mailto:info@ZTFrames.com)