

ZTF Zirnhelt Timber Frames

Sustainable by Design

The Cariboo Chalet

At a Glance:

Main (28' x 38')	1,064 sq ft
Upper	700 sq ft
Bsmt	1,064 sq ft
Bedrooms	4
Bathrooms	2.5
Total living space	2,828 sq ft
Covered decks	500 sq ft
Total Footprint	1,564 sq ft



This plan designed by: Zirnhelt Timber Frames

This 28' x 38' chalet-style home is 1064 square feet on the main floor and 700 square feet in the upstairs (2/3 loft) for a total of 1764 square feet plus full basement (daylight front) and 500 sq. ft. of covered decks. This home is truly designed for living with a pantry adjacent to the kitchen, walk-in closet in the master bedroom, bright and spacious great room, large covered front deck, rear entry way and wrap-around porch. Classic shapes and simple roof lines help make this beautiful timber frame affordable. Other key features including exposed Douglas fir beams, traditional mortise and tendon joints with hand-made oak dowels, solid beetle-killed pine square log walls (or optional 2x6 frame walls between posts), plenty of glass and a high vaulted ceiling add the magic feeling of being in a fine mountain chalet to this versatile home.

Call or email us to start your sustainable building project. Visit our site, meet our crew, and tour a Zirnhelt Timber Frame home. We look forward to working with you!

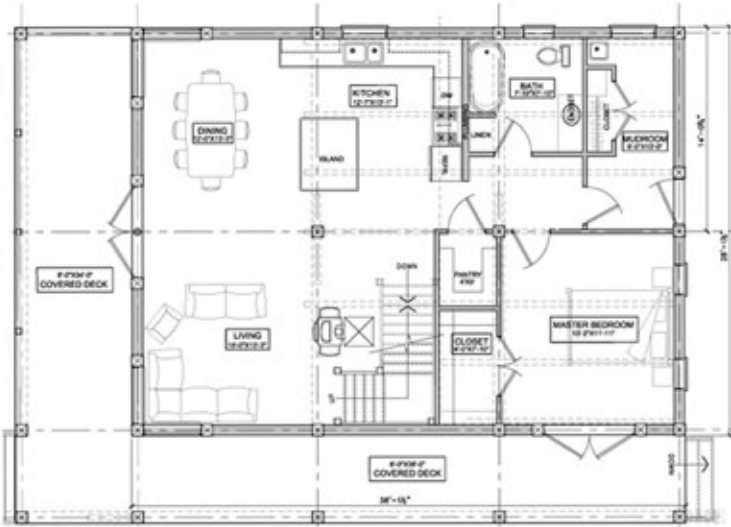
www.ZTFrames.com

250.243.0055 | cell: 250.392.0103 | fax 250.243.2419 | info@ZTFrames.com

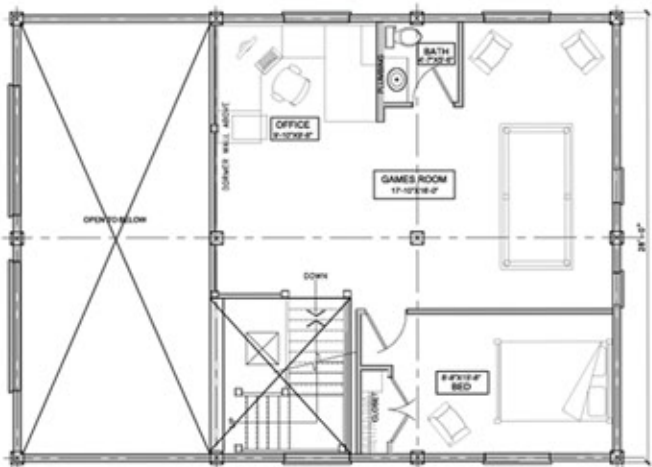
ZTF Zirnhelt Timber Frames

The Cariboo Chalet

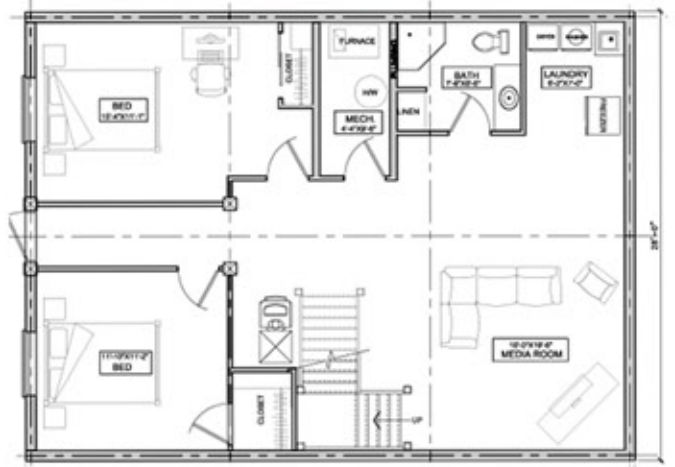
Main Level Floor Plan



Loft Floor Plan



Basement Floor Plan



Healthy Homes for Sustainable Living

www.ZTFrames.com

250.243.0055 | fax 250.243.2419 | info@ZTFrames.com