

ZTF Zirnhelt Timber Frames

Sustainable by Design

Bragg Creek Country Home

At a Glance:

<i>Main (36' x 36')</i>	<i>1,296 sq ft</i>
<i>Upper</i>	<i>864 sq ft</i>
<i>Basement</i>	<i>1,296 sq ft</i>
<i>Bedrooms</i>	<i>3</i>
<i>Bathrooms</i>	<i>2</i>

Total living space 3,465 sq ft



This home designed by: Zirnhelt Timber Frames

At 36' x 36' on the main floor with a full daylight basement and 2/3 loft, this home is spacious with an elegant presence and carefully designed simplicity that brings luxury and affordability together. Like all Zirnhelt Timber Frames, it is completely handcrafted with traditional mortise and tenon joinery. Floor plans for this classic frame can easily accommodate up to six bedrooms with exceptional light and space for entertaining games, media and exercise rooms. Large covered porches protect your investment and make all-season outdoor living literally at your doorstep. The exceptional strength and beauty of the Queen Truss' are a great fit for this design.

Call or email us to start your sustainable building project. Visit our site, meet our crew and tour a Zirnhelt Timber Frame home.

We look forward to working with you!

www.ZTFrames.com

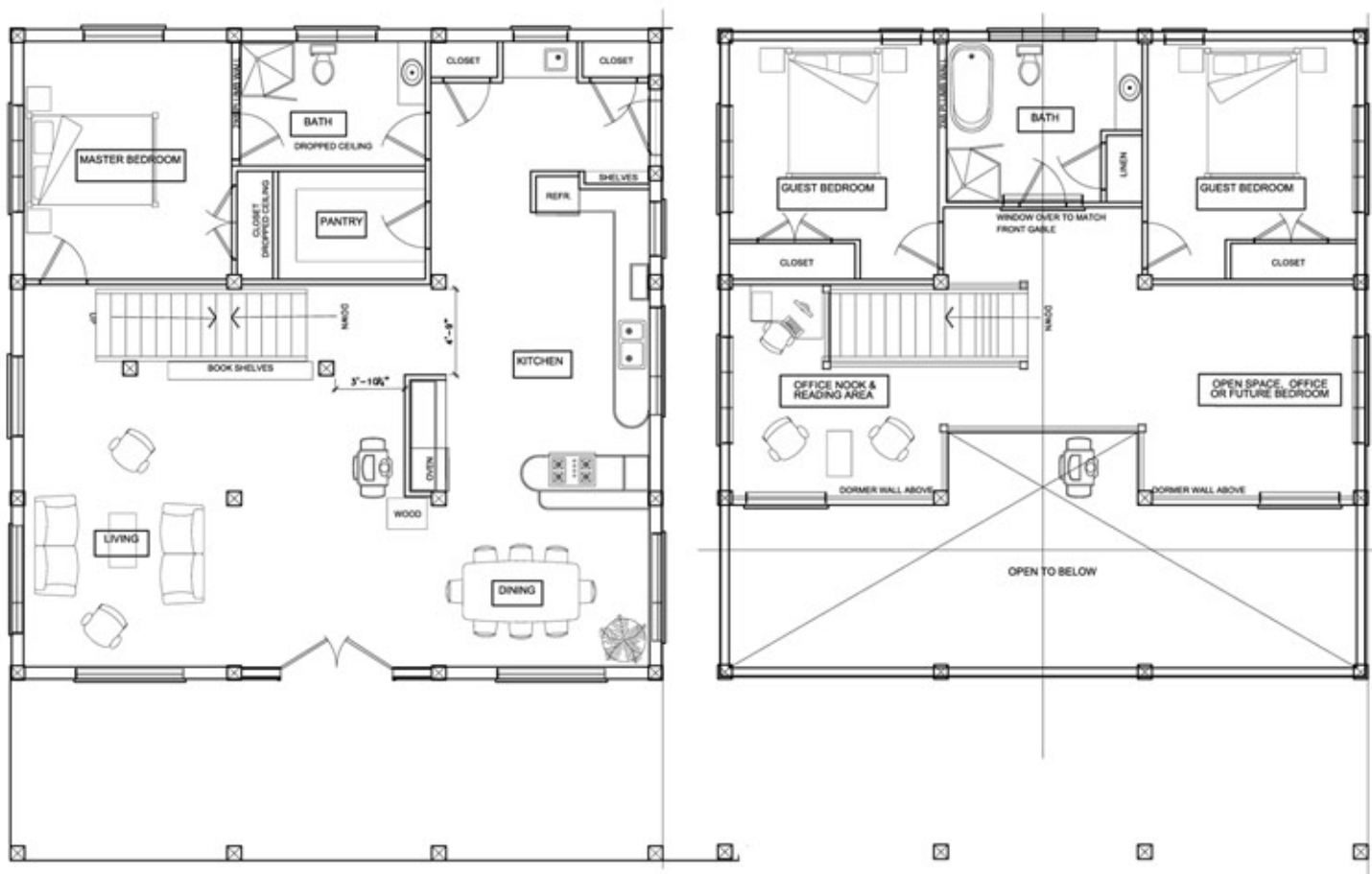
250.243.0055 | cell: 250.392.0103 | fax 250.243.2419 | info@ZTFrames.com

ZTF Zirnhelt Timber Frames

Bragg Creek Country Home

Main Level Floor Plan

Loft Floor Plan



Healthy Homes for Sustainable Living

www.ZTFrames.com

250.243.0055 | fax 250.243.2419 | info@ZTFrames.com