

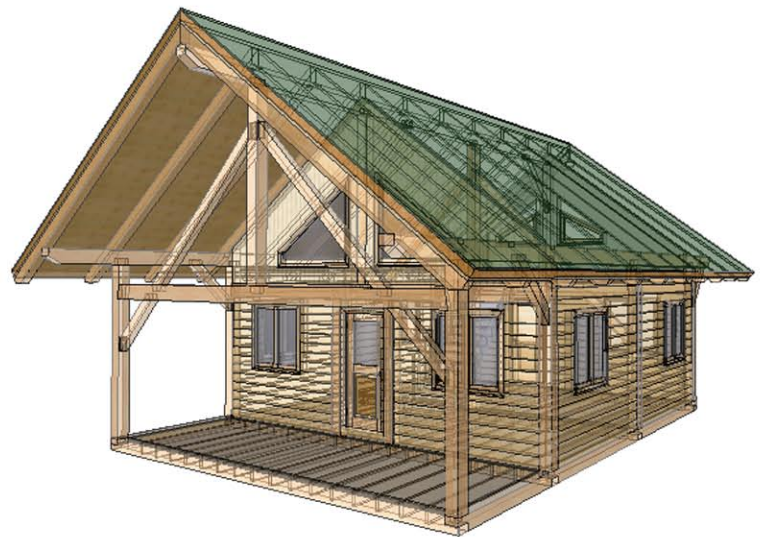
ZTF Zirnhelt Timber Frames

Sustainable by Design

24' x 24' Cottage

At a Glance:

<i>Main (24' x 24')</i>	<i>576 sq ft</i>
<i>3/4 Loft</i>	<i>432 sq ft</i>
<i>Bedrooms</i>	<i>3</i>
<i>Bathrooms</i>	<i>1.5</i>
<i>Total living space</i>	<i>1,008 sq ft</i>
<i>Covered decks</i>	<i>192 sq ft</i>
<i>Total Footprint</i>	<i>768 sq ft</i>



Designed by: Zirnhelt Timber Frames

This cabin is as compact as it gets for a family cottage with three bedrooms. This plan would work well with timber frame or square log dovetail construction. Despite the small size, the covered porch and 1/4 vault add a spacious feel

Call or email us to start your sustainable building project. Visit our site, meet our crew, and tour a Zirnhelt Timber Frame home.

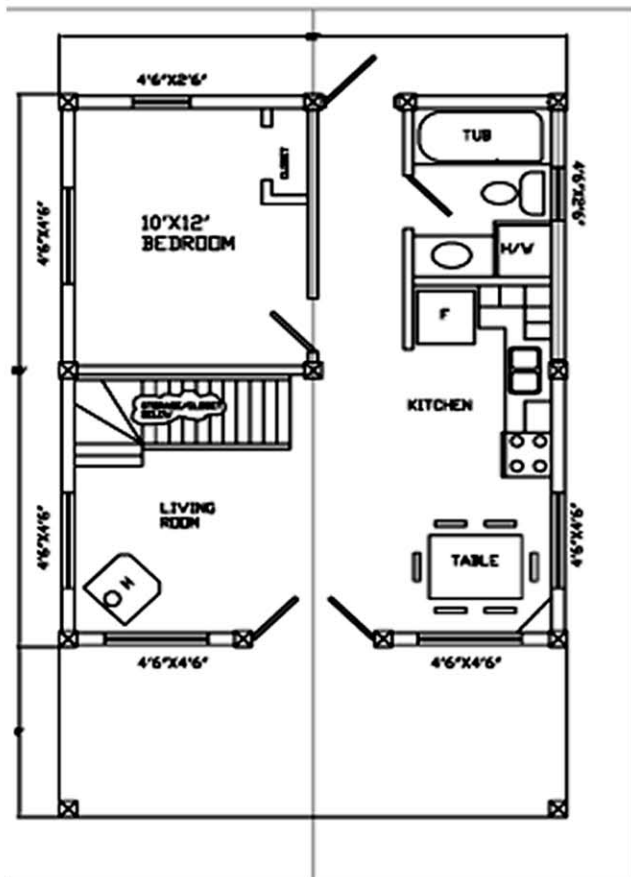
We look forward to working with you!

www.ZTFrames.com

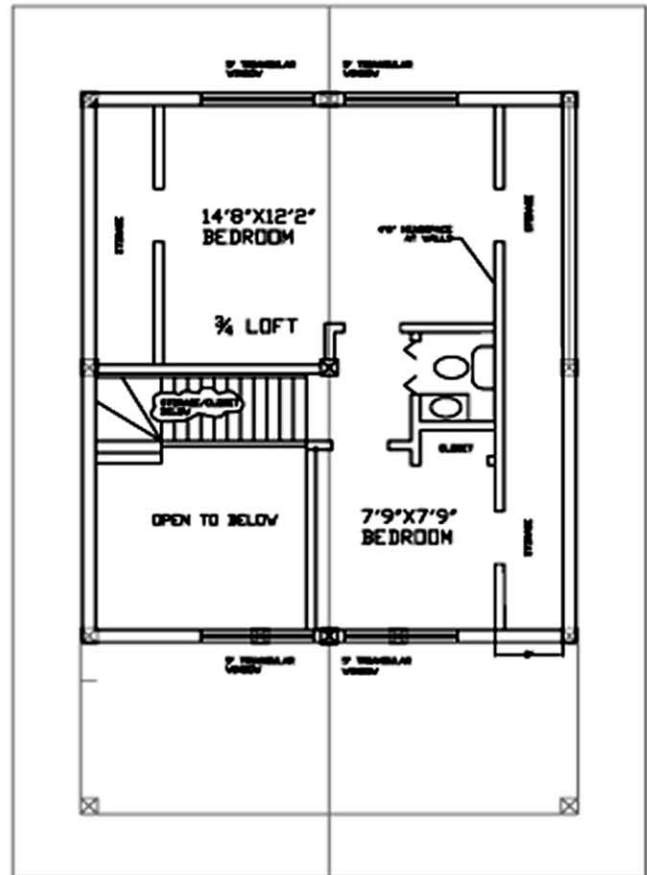
250.243.0055 | cell: 250.392.0103 | fax 250.243.2419 | info@ZTFrames.com

ZTF Zirnhelt Timber Frames

24' x 24' Cottage



Main Level Floor Plan



Loft Floor Plan

Healthy Homes for Sustainable Living

www.ZTFrames.com

250.243.0055 | fax 250.243.2419 | info@ZTFrames.com